

# REACH X5

A highly dexterous manipulator for remote intervention in defence and commercial industry operations

## LIGHT-WEIGHT, HIGH-PERFORMANCE

The Reach X series is designed for critical commercial and military operations requiring hard-wearing, reliable technology. The design prioritises durability, dexterity, speed and portability in response to industry-specific operational needs.

The Reach X5 is a high-performance five-function manipulator with interchangeable tooling that enables operators to cut, grab, recover and repair using existing portable ROVs. A compact, modular build allows for maximum portability and rapid serviceability. With continuous rotate joints and unparalleled torque density, Reach X is the most powerful, dexterous underwater manipulator on the market.

### • MECHANICAL

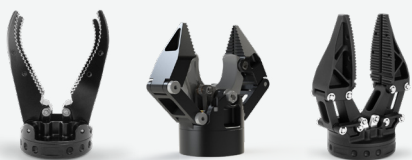
Full Reach Lift	4kg / 8.8lb
Grab Force	25kg / 135lbf
Weight (Air)	2.3kg / 5lb
Weight (Water)	1.6kg / 3.5lb
Reach	400mm / 15.7in

### • ELECTRICAL

Voltage	24-30V
COMS	RS232 / RS485 / Ethernet

### • ENVIRONMENTAL

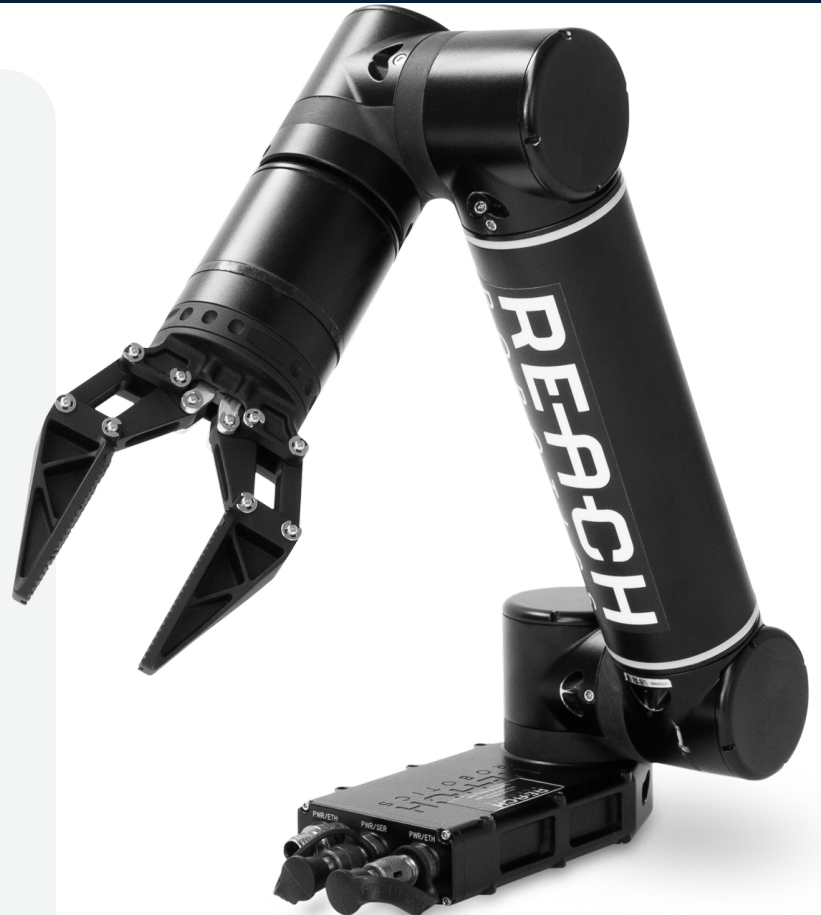
Depth	300MSW / 1000ft
Temp	5°C to 45°C / 41°F to 113°F
Material	AL6061



Interchangeable end-effectors or custom tooling options

## FEATURES

- Designed for industry leading ROVs and UGVs
- High Torque Density - Industry leading lift to weight ratio
- Field Serviceable - joints can be replaced in 5 minutes
- Modular joint design requiring minimal spares.
- Multiple Control Options - Master Arm, Control Pods, Gamepad, Reach Control, API



Intuitive control options for varied operator requirements.

Master Arm & Control Pod enabled

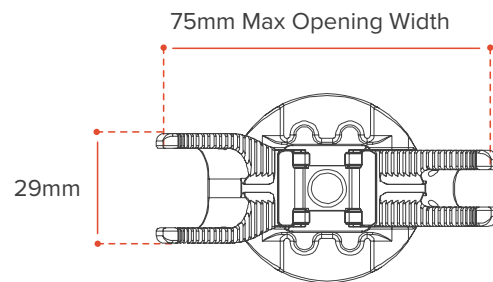
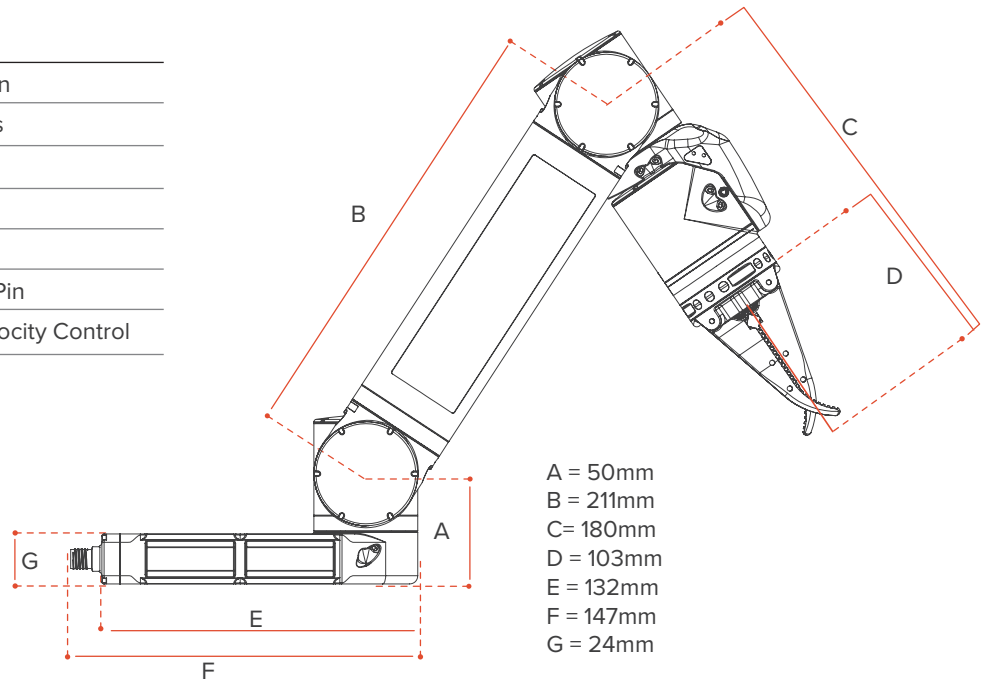
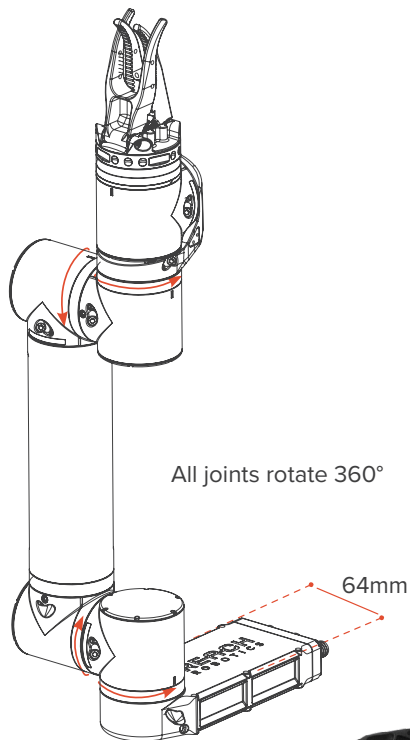
*Note: Controllers not included*



Proven on industry leading ROVs

## SPECIFICATIONS &amp; DIMENSIONS

Max Reach	400mm / 15.7in
Wrist Rotation Torque	7Nm / 62in lbs
Wrist Rotation Speed	140°/s
Grab Speed	3 seconds
Outer Diameter	50mm / 1.97in
Connector Cable	3x Impulse 6 Pin
Control Modes	Position & Velocity Control



## RANGE OF MOTION - TOP VIEW

